

 **Residential**

Chrysalis House (Lexington)
800-713-0954 Women Only

Layne House (Prestonsburg)
(606) 886-7839

Crossroads (Corbin)
(606)-526-9552

Independence House (Corbin)
(prenatal or postpartum only)
(606) 523-9386

 **Area Services**

Buckhorn Children & Family Services
(606) 398-7245
(Buckhorn)

Michael A Spare & Associates
(606) 487-8484
(Hazard)

Whitesburg DUI Service Agency
(606) 633-1130
(Whitesburg)

 **KRCC 24 HR Crisis and Information Line**
1-800-262-7491

Breathitt County Outpatient
(606) 666-7591

Knott County Outpatient
(606) 785-3556

Lee/Owsley County Outpatient
(606) 464-3212

Leslie County Outpatient
(606) 672-4215

Letcher County Outpatient
(606) 633-4439

Perry County Outpatient
(606) 436-5761

Wolfe County Outpatient
(606) 668-7420

 **Emergency Services**

ARH Psychiatric Center
(Hazard) (606) 439-6805

Detox Services

Pikeville Regional Hospital
(606) 218-4680

Our Lady of Bellefonte (Ashland)
(606) 833-3333 or 866-910-6524

Trillium Center at Baptist
(Corbin) 800-395-4435

 **Self Help Network**

Narcotics Anonymous (NA)
www.na.org or www.gracna.org
888-987-7700
818-773-9999

Alcoholics Anonymous (AA)
www.alcoholics-anonymous.org
800-467-8019

Al-Anon
800-344-266

Cocaine Anonymous World Services Inc.
800-347-8998

Gamblers Anonymous
213-386-8789

Overeaters Anonymous
505-891-2664

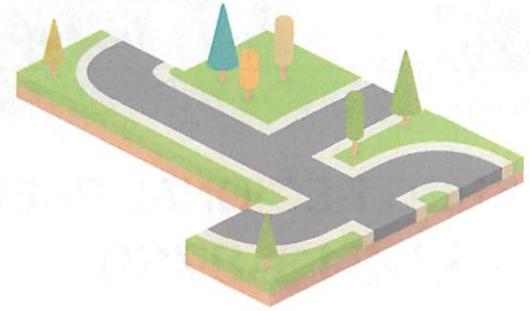
Sex Addicts Anonymous
800-477-8191

www.kyhelf.info

 **Intensive Outpatient Women's Treatment**

Project ADVANCE
(606) 436-5761 ext. 7600
(Hazard)

Solutions (Pippa Passes)
(606) 368-2299

 **Faith Based Services**
Pastoral Counseling

Christian Appalachian Project 800-755-2016

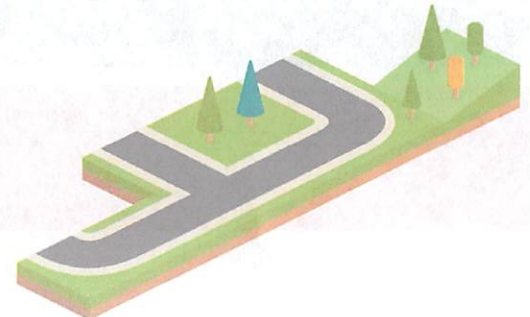
 **Recovery Support**

LifeLine (Hindman)
(606) 785-3876 No Fee

LifeLine (Hyden)
(606) 275-5444 or 275-2600
No Fee

LifeLine (Hazard)
(606) 439-5116 No Fee

WestCare (Ashcamp)
(606) 754-7077 Men Only





KRCC REGIONAL PREVENTION CENTER
866-213-8739



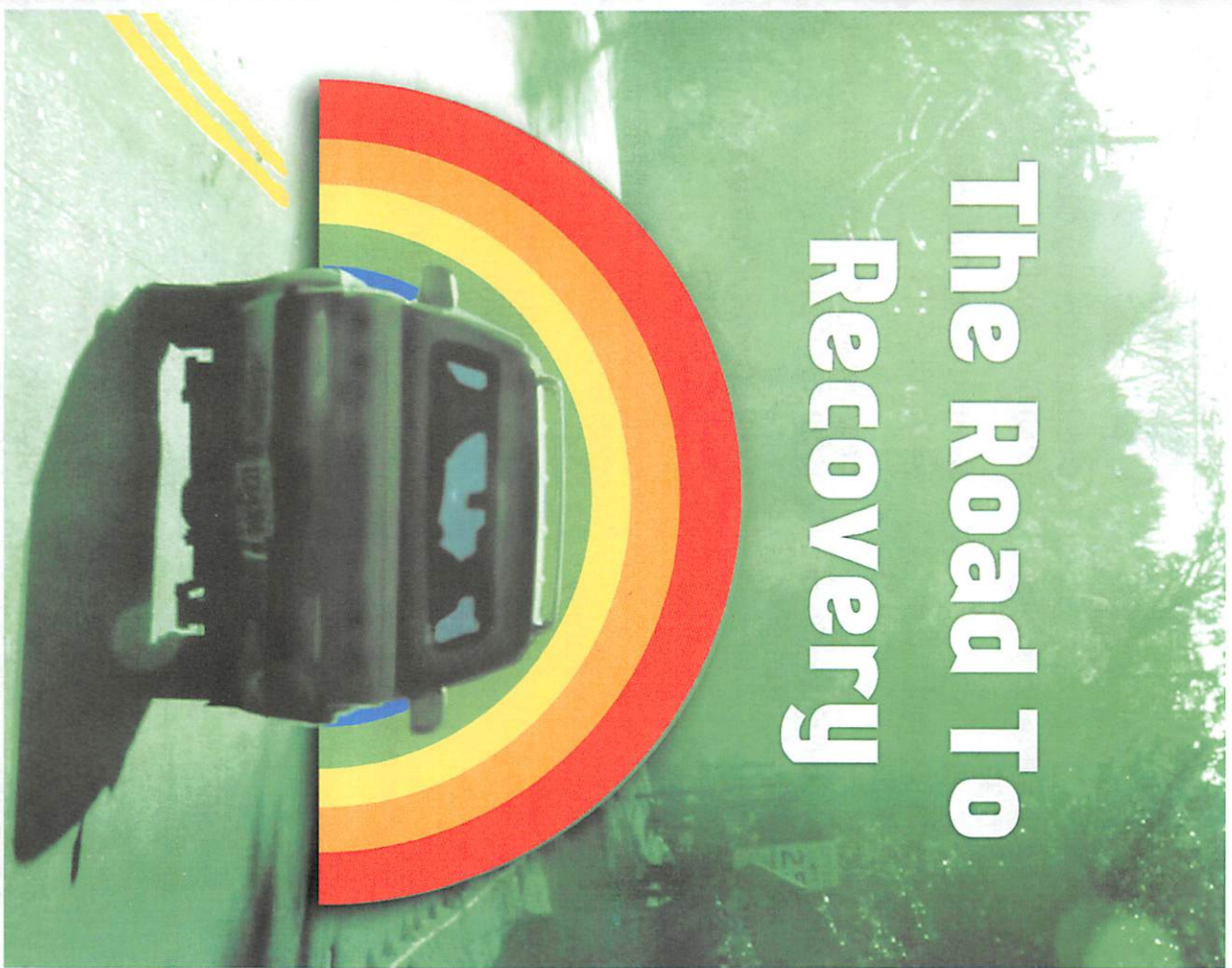
**KRCC Regional
Prevention Center**

Services Provided:

- Community Consulting
- Prevention Library
- Early Intervention/Zero Tolerance Program
- Prescription Medication Diversion Education



KRCC REGIONAL PREVENTION CENTER
79 Little Grapevine Creek Road Hazard, Ky 41701 Tel: 866-213-8739



The Road To Recovery

The Road to Recovery needs a start. Let this be your first step. We know you can do it, and we are here to help.

